

24/01344/FUL
122A Brunswick Street

Proposal for new secure bin store, incorporating new paths and associated fencing for 122A-126B Brunswick Street.

The application is at planning committee as the applicant is the Council.

Recommendation is to permit

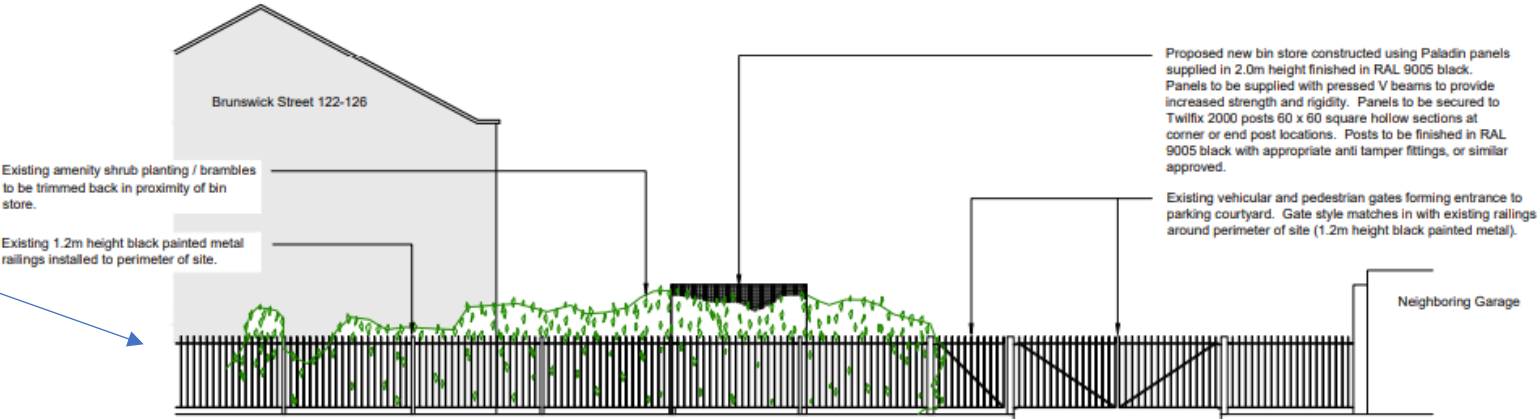
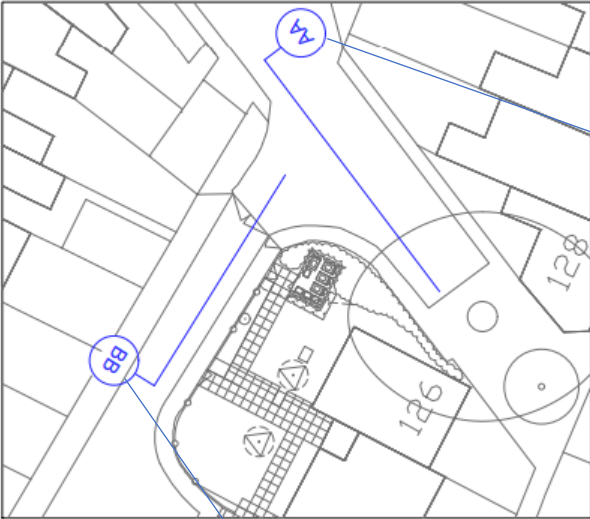
Site location



Existing and proposed block plans



Proposed elevations



Proposed new bin store constructed using Paladin panels supplied in 2.0m height finished in RAL 9005 black. Panels to be supplied with pressed V beams to provide increased strength and rigidity. Panels to be secured to Twifix 2000 posts 60 x 60 square hollow sections at corner or end post locations. Posts to be finished in RAL 9005 black with appropriate anti tamper fittings, or similar approved.

Existing vehicular and pedestrian gates forming entrance to parking courtyard. Gate style matches in with existing railings around perimeter of site (1.2m height black painted metal).

Proposed new bin store constructed using Paladin panels supplied in 2.0m height finished in RAL 9005 black. Panels to be supplied with pressed V beams to provide increased strength and rigidity. Panels to be secured to Twifix 2000 posts 60 x 60 square hollow sections at corner or end post locations. Posts to be finished in RAL 9005 black with appropriate anti tamper fittings, or similar approved.

Existing amenity shrub planting / brambles to be trimmed back to enable bin store to be incorporated.

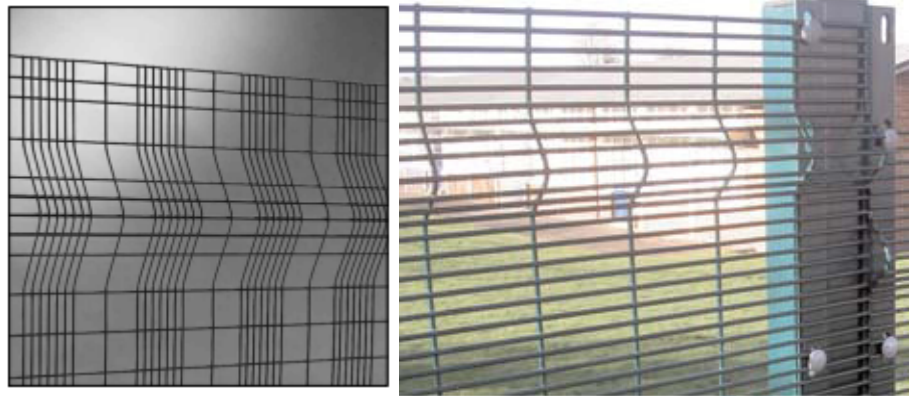
Existing 1.2m height black painted metal railings installed to perimeter of site.

Proposed swing gate (single leaf) 2.0 m height, left hand hinged supplied in RAL 9005 black. Supplied with matching Paladin welded mesh infill in colour to match. Locking hardware to be provided to gate.

Existing 1.0m height timber picket fence and gate.

Proposed new hedge planting to screen bin store, plants to be supplied in 60-90cm sizes and allowed to grow in height to provide robust green boundary to bin store.

Proposed new section of timber picket fence incorporating new gate. Fence to be installed in natural timber finish to match existing.



Typical examples of Paladin style fencing – proposed to be finished in black

Elevation BB - From Within Parking Courtyard Scale 1:50



24/01344/FUL

Key considerations

- Design,
- Impact on the conservation area and street scene,
- Impact on neighbouring amenity,
- Sustainable development

Recommendation and suggested conditions

- Standard time condition, and
- Approved plans.